

MONDEV

INDUSTRIAL SPACE

for lease

1961 Notre-Dame-de-Fatima St.
Laval

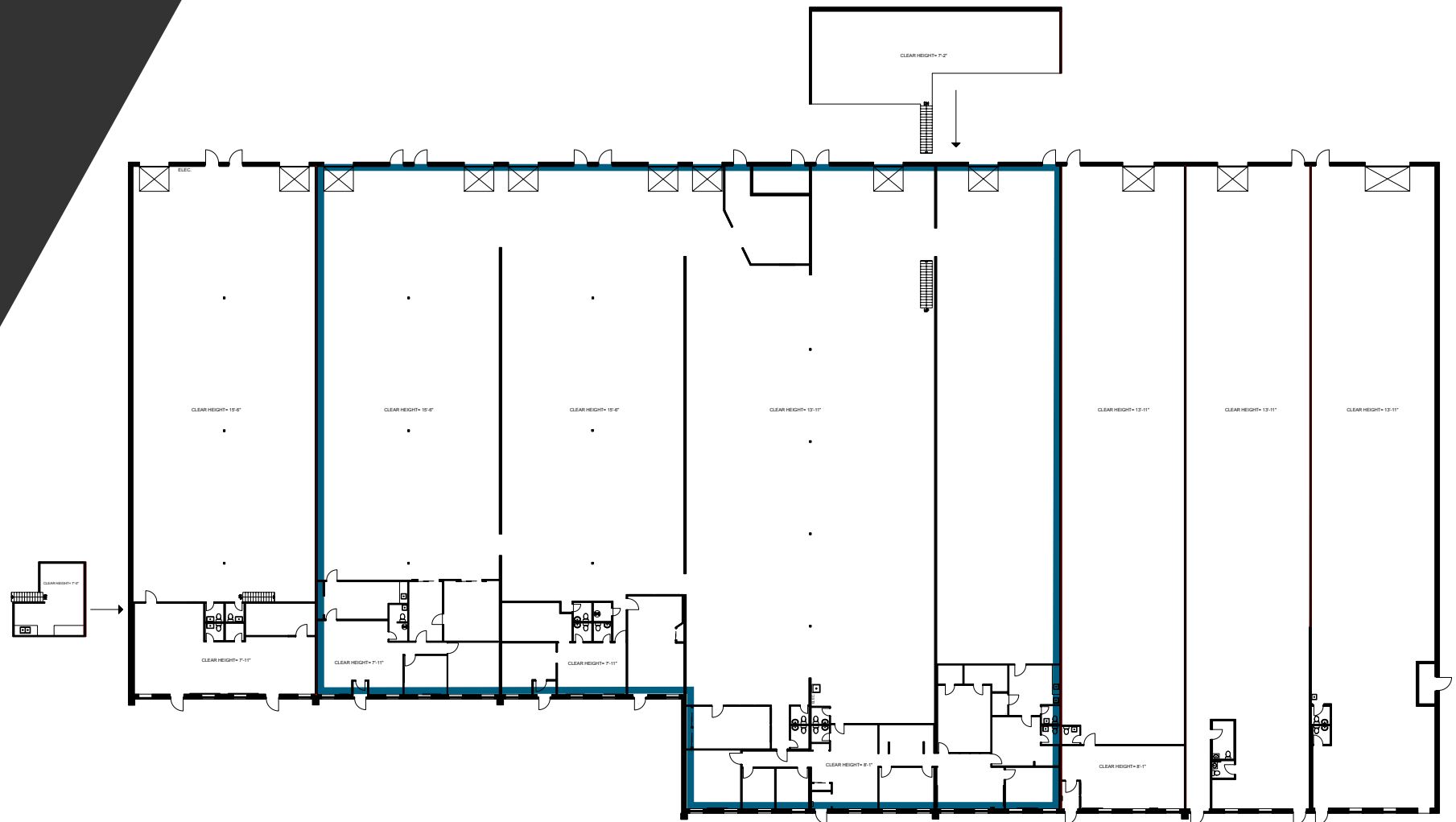


± 32,000 sq. ft.


Prime industrial space offering up to ±32,000 sq. ft. in Laval.

Strategically located near Highway 19, the property is ideal for warehousing, distribution, logistics, and light industrial users.

Flexible demising options available from 6,000 sq. ft.



PROPERTY FEATURES:

Clear height	15'6"
Truck-level doors	7
Warehouse	80%
Power	Up to 200 A / 600 V
Air conditioning	Yes
Parking	Ample
Highways	19, 440
Transport	 Montmorency





LEASE TERMS

5 years +

RENTAL RATES

CONTACT US

ELECTRICITY

Metered

DEMISABLE

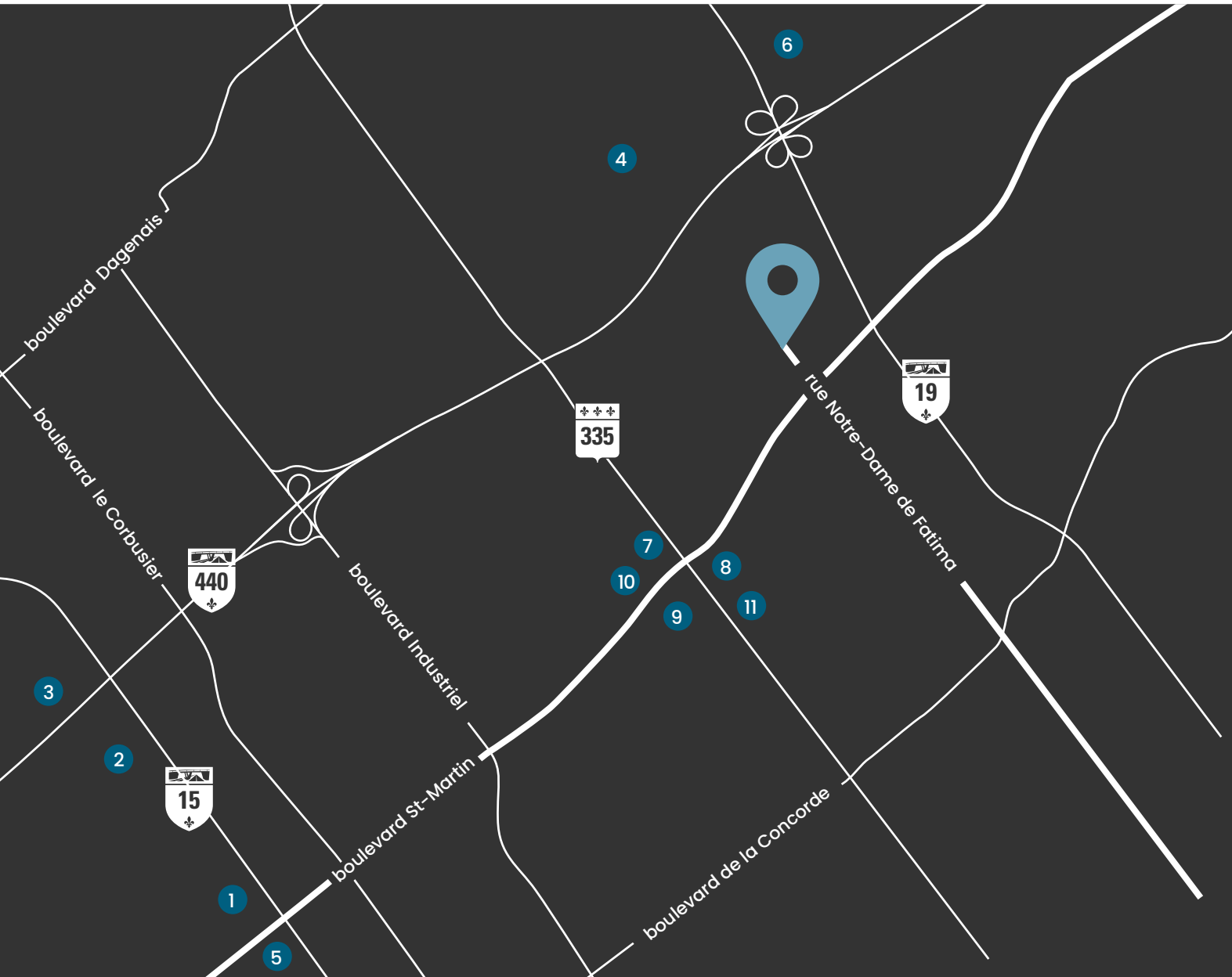
As of 6,000 sq.ft.

ADDITIONAL RENT

\$5.47

AVAILABLE
SEPTEMBER 2026





Transit

 **Metro**
Montmorency

 **Bus**
50, 70

 **Gare**
Vimont



Services

- 1 Centropolis
- 2 Carrefour Laval
- 3 Costco
- 4 Hopital de la Cite-de-la-Santé
- 5 Sami Fruits
- 6 Walmart
- 7 Nautilus Gym
- 8 Rôtisserie St-Hubert
- 9 Wendy's
- 10 Pizza Hut
- 11 La Belle Province

TANIA D'AVINO
Vice-President, Leasing

514 723-3778
tdavino@mondev.ca

